

PART OF THE SE.1/4, OF SECTION 7, T.6N., R.2W., S.L.B. & M.

818

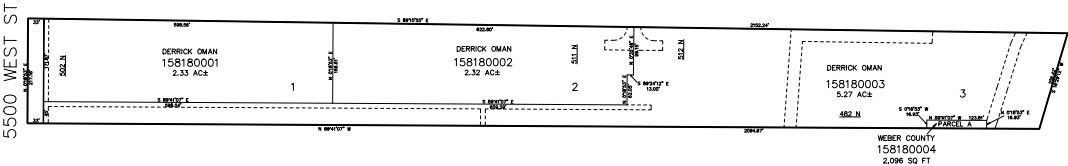
WARREN ESTATES SUBDIVISION

IN WEBER COUNTY

TAXING UNIT: 531

SCALE 1" = 200'

SEE PAGE 24



SEE PAGE 24

10' UTILITY & DRAINAGE EASEMENTS EACH
SIDE OF PROPERTY LINES AS INDICATED
BY DASHED LINES EXCEPT AS OTHERWISE
SHOWN.

FOR COMPLETE SURVEY DATA SEE
ORIGINAL DEDICATION PLAT IN
BOOK 95, PAGE 74 OF RECORDS.

FOR TAX PURPOSES ONLY

BK 05-23